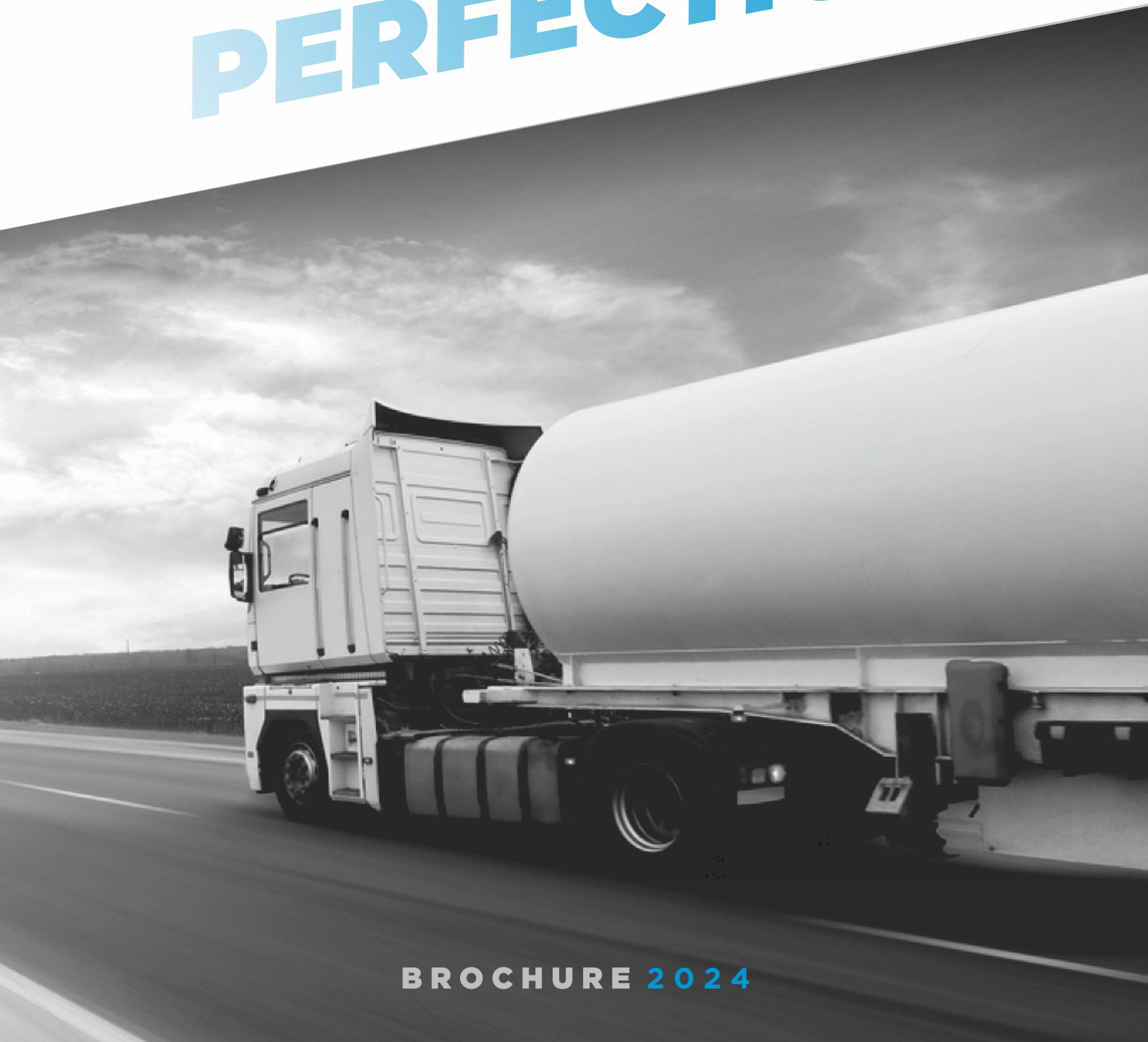


BOTTOM LOADING
TANK TRUCKS
EQUIPMENT



WHERE
PRECISION MEETS
PERFECTION



BROCHURE 2024

BOTTOM LOADING TANK TRUCK EQUIPMENTS

BOTTOM LOADING ADAPTOR

- Poppet seal can be easily replaced without removing the API Adaptor for the tank.
- API Adaptor for reduced product retention.
- Bottom Loading Adaptor meets API 1004 and EN13083.



EMERGENCY VALVE

- Air-assisted emergency valves make product handling safer and installation more convenient.
- Emergency valve installed at the bottom of tank truck and will be operated pneumatically to open/close.
- The seat of the valve is located inside of the tank with shear groove.
- Shear groove cut-off the pipeline in case of accident to prevent spillage of liquid.
- Emergency Valve meets API RP1004 and EN13308 standard.



VAPOR VENT

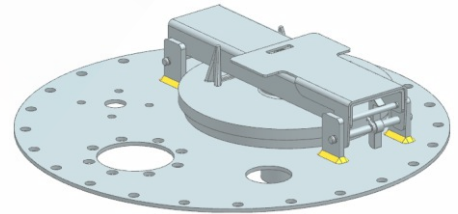
- Vapour vent operated pneumatically and mounted in the manhole cover.
- Vapour Vent maintains a low profile to keep the vents well below the overturn.
- Increased spring tension for a quick, tight closure
- Vapour Vent meets API 1004 and EN13082.



BOTTOM LOADING TANK TRUCK EQUIPMENTS

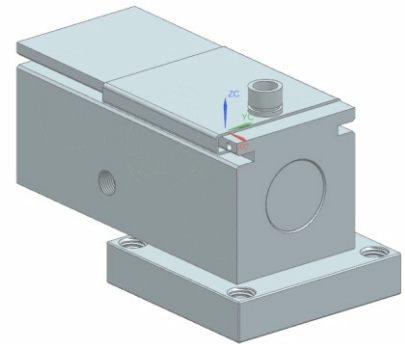
MANHOLE COVER

- Manhole cover include one pressure vacuum vent.
- Cover include mounting hole for vapour vent, overfill detection sensor and dip interlock.
- If needed can be safely and easily disassembled for field repair.
- Conforms to API 1004 and EN13317.



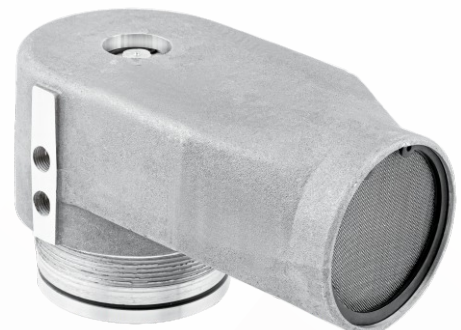
DIP INTERLOCK

- Dip interlock operated pneumatically to open/close.
- It has 1" opening to insert dip rod.
- From dip valve you can measure fuel (liquid) level in the compartment.



DUMP VENT

- Vapour vent provides additional safety and security when carrying hazardous liquids.
- Pressure is vented into the atmosphere when it is not sealed for vapour transfer. In case of vapour transfer, Dump vent is closed.



BOTTOM LOADING TANK TRUCK EQUIPMENTS

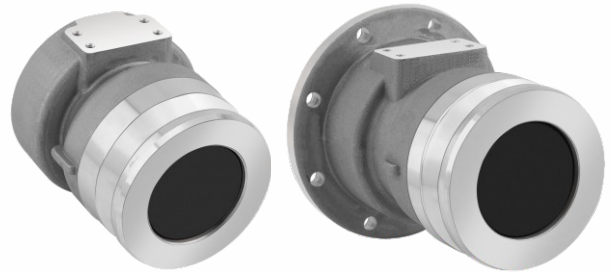
DROP ADAPTOR

- Drop adaptor designed for quick connection between hose pipe and API Bottom loading adaptor.
- Adaptor made in accordance with API RP1004.



VAPOUR ADAPTOR

- Vapour adaptor is use to collect vapour from tank compartment.
- At the time of loading and unloading vapour adaptor connect with vapour line to collect it.
- Vapour adaptor mount at the end of the pipe recover line.



OVERFILL PREVENTION

- Overfill system provide auto cut-off of product flow at a predetermined liquid level.
- It will warns of an overfill condition.
- Five-wire optic sensor are purpose to made for liquid product overfill prevention and point level detection.



